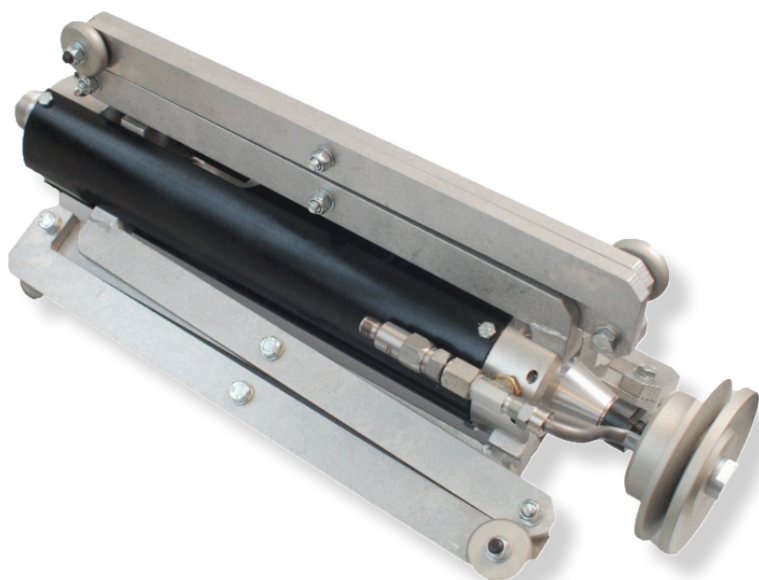




**AIRBLAST**

## **PIPECOATER-II**

Internal Pipecoater for pipe ID 180 mm to 950 mm (7" - 37")



### **Internal Pipe Coating Solutions**

PIPECOATER-II tool is designed to coat the inside of pipe or tubing without the need to rotate pipe or tubing and to apply an even paint film thickness throughout. Generally, any type of coating may be used in this tool that can be airless sprayed. To obtain the best possible production, one man should operate the Control Gun while another man pulls the tool through the pipe or tubing.

The Airblast Pipecoater provides an innovative and efficient solution for applying paint to the inside of pipe, tubing or other cylindrical structures. With the Pipecoater, you can apply a uniform layer of paint at remarkable speed.

The Pipecoater II tool is available in four packages to suit jobs with differing lengths of pipes: 2, 4, 6 or 12 mtrs. Six sizes of spray tip are available, ranging from .018" to .043" to suit the specified coating.

PIPECOATER-II is developed for pipe or tubing ranging from 180 mm to 950 mm (7" - 37") ID. PIPECOATER-II can be connected to a suitable airless paint spray machine of minimum 45:1 ratio.

### **Advantages**

- Efficiently handles wide range of coatings
- Applies uniform layer at remarkable speed
- No need to rotate the pipe or tubing
- Unique gun assembly ensures precise control
- Air-controlled centering carriage legs easily adjust for gradual pipe bends

**PIPECOATER-II INTERNAL PIPECOATER ASSEMBLIES**

Part no.	Description
	<b>For pipes with ID of 180 mm to 950 mm (7" - 37")</b>
7100200	Pipecoater-II, for use up to 2 meters (6 ft.) long pipe incl.: 3.0 meters (10 ft.) Air Control Hose 3.5 meters (11 ft.) Paint Spray Hose
7100400	Pipecoater-II, for use up to 4 meters (12 ft.) long pipe incl.: 5.0 meters (16 ft.) Air Control Hose 5.5 meters (18 ft.) Paint Spray Hose
7100600	Pipecoater-II, for use up to 6 meters (20 ft.) long pipe incl.: 10.0 meters (32 ft.) Air Control Hose 10.5 meters (34 ft.) Paint Spray Hose
7100800	Pipecoater-II, for use up to 12 meters (40 ft.) long pipe incl.: 15.0 meters (48 ft.) Air Control Hose 16.0 meters (52 ft.) Paint Spray Hose
	<b>Delivery includes:</b> <ul style="list-style-type: none"><li>• Paint Spray Tool with Centering Legs</li><li>• Air Control Group and Gun</li><li>• Air Control Hose</li><li>• High Pressure Paint Hose</li></ul>

**PIPECOATER-II HOSES**

7100900	Air Control Hose 3.0 meters ( 10 ft. )
7101000	Air Control Hose 5.0 meters ( 16 ft. )
7101100	Air Control Hose 10.0 meters ( 32 ft. )
7101200	Paint Spray Hose 3.5 meters ( 11 ft. )
7101300	Paint Spray Hose 5.5 meters ( 18 ft. )
7101400	Paint Spray Hose 10.5 meters ( 34 ft. )

**PIPECOATER-I FLOW CONTROL TIPS**

7101500	Flow control tip 0.018" orifice
7101600	Flow control tip 0.021" orifice
7101700	Flow control tip 0.026" orifice
7101800	Flow control tip 0.031" orifice
7101900	Flow control tip 0.036" orifice
7102000	Flow control tip 0.043" orifice

**PIPECOATER-II GUN ASSEMBLY**

7102100	Spray gun, incl. hose adaptor assembly
7102200	Air group for spray gun
7102300	Adapter for silver gun

**PIPECOATER-II REPAIR KITS AND RECOMMENDED SPARES**

7119200	Rotating head kit, Pipecoater-II includes 7114600, 7118000, 7114700 and 7114800
7119300	Wheel kit, Pipecoater-II includes 7117800, 7118000, 7118100, 7118200 and 7119000
7105000	O-ring set, Air Control Hose
7105200	O-ring set, Pipecoater-II
7111400	Strainer (2 pcs.)
7113600	Blade (3 pcs.)
7114000	Bearing
7113100	Ball bearing
	Spray tip (sizes to be specified)