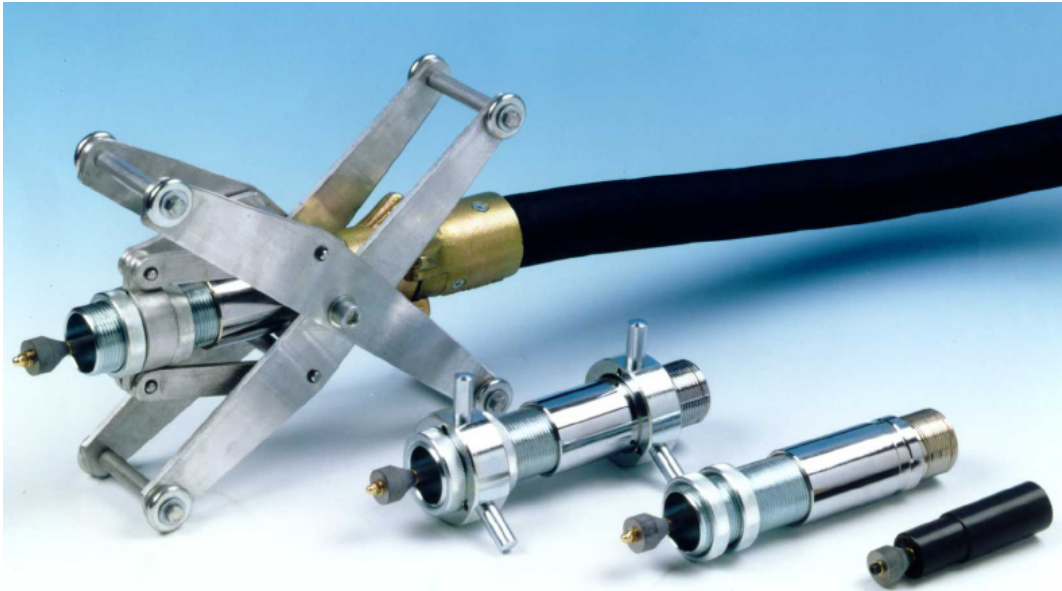


# CB-0/1/2

Circleblast Internal Pipe Blasters



**AIRBLAST**



The Circleblast Internal Pipe Blasters are designed to blast clean pipe ranging in size from 1 1/4" to 12" (13 to 305 mm) I.D. The tool connects to an abrasive blast machine in place of a standard nozzle. In operation, the Circleblast nozzle directs the air/abrasive mixture at a deflection tip. This tip causes the blast pattern to fan out into a wide, circular pattern, which cleans the inside of the pipe as the tool is passed through. Two centering devices are available to hold the tool in position during passes.

The Circleblast tool is made from the finest materials available. However, some of its internal wear parts are of necessity rather brittle, due to their extreme hardness. The tool should therefore be handled carefully to avoid dropping it or giving it a sharp blow.

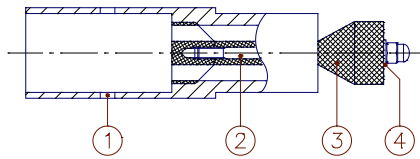
PIPEDIAMETER in (mm)	TOOL	TOOL RANGE in (mm)	CENTERING DEVICE	REQUIRED NOZZLE	AIR CONSUMPTION (cfm) (m <sup>3</sup> /min)	
1 1/4" - 3" (32 - 76 mm)	CB-0	1 1/4" - 3" (32 - 76 mm)	-	-	400	11.3
3" - 12" (76 - 305 mm)	CB-1 CB-2	3" - 5" (76 - 127 mm)	CBC-1	AHBN-8 AHBN-10	225 400	6.4 11.3
	CB-1 CB-2	5" - 12" (127 - 305 mm)	CBC-2	AHBN-8 AHBN-10	225 400	6.4 11.3

### CB Circleblast Internal Pipe Blasters Assemblies

Part no.	Description
3002100	CB-0 Circleblast for direct mounting on blast hose with 1/2" I.D. ( 13 x 7 mm ) for pipes 1 1/4" to 3" (35 - 76 mm) I.D. TC deflection tip
3002200	CB-1 Circleblast complete with: 1/2" nozzle HBN-8, CBC-1 centering collars, CBC-2 adjustable centering carriage.
3002300	CB-2 Circleblast complete with: 5/8" nozzle HBN-10, CBC-1 centering collars, CBC-2 adjustable centering carriage.

### CB-0 Circleblast Internal Pipe Blasters Parts List

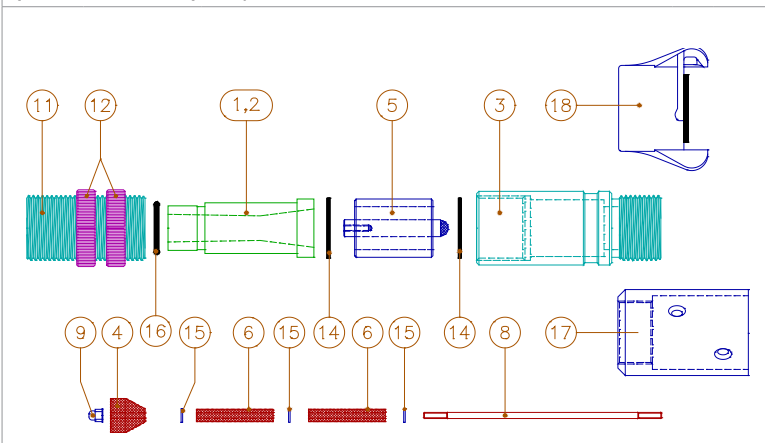
Item	Part no.	Description
01	3002500	Housing
02	3002600	Bolt
03	3016000	CB-110/1 Deflection tip TC
04	3028000	CB-122 Washer brass



### CB-1/2 Circleblast Internal Pipe Blasters Parts List

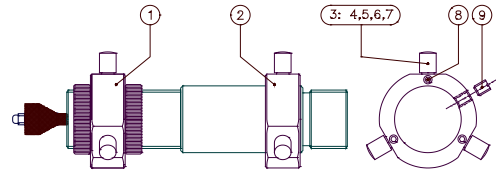
Item	Part no.	Description		
01	2112000	AHBN-8 1/2" (13 mm) nozzle TC		
02	2113000	AHBN-10 5/8" (16 mm) nozzle TC		
03	3015000	CB-111 Tool holder		
04	3016000	CB-110/1 Deflection tip TC	◇	1
05	3018000	CB-112/1 Stem support assembly TC	◇	1
06	3020000	CB-113/1 Throat sleeve TC	◇	2
08	3023000	CB-115 Throat rod	◇	1
09	3024000	CB-116 Tip holding nut	◇	1
11	3025000	CB-117 Protection sleeve threaded		
12	3026000	CB-118 Curled lock nut		
14	3027000	CB-119 Stem support gasket	◇	2
15	3028000	CB-122 Washer brass	◇	2
16	3029000	CB-123 O-ring	◇	1
17	2135000	CHE-2 nozzle holder, aluminum		
18	2163000	CFT cast iron quick coupling		

All (◇)-marked items are included in Circleblast Spare Parts kit (art.nr. 3022000) in quantities shown.



### Centering collars for Circleblast

Item	Part no.	Description
	3003000	CBC-1 Centering collars complete for pipes 3" to 5" (76 - 127 mm) I.D. Includes collars and four six-button sets

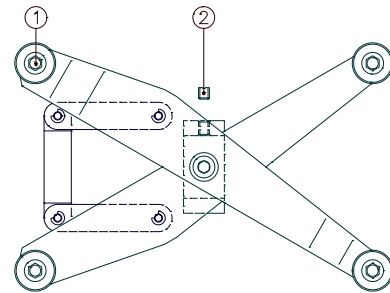


### Spare parts for CBC-1 centering collars

01	3004000	Front collar, cad-plate
02	3005000	Rear collar, cad-plate
03	3006000	Centering buttons 4 six-button sets
04	3007000	5/16" (8 mm) long button for 3 1/2" (89 mm) I.D. pipe
05	3008000	9/16" (15 mm) long button for 4" (102 mm) I.D. pipe
06	3009000	13/16" (20 mm) long button for 4 1/2" (115 mm) I.D. pipe
07	3010000	18/16" (28 mm) long button for 5" (127 mm) I.D. pipe
08	3010100	Bolt
09	3010200	Collar locking bolt

### Centering carriage for Circleblast

Item	Part no.	Description
	3011000	CBC-2 Centering collars complete for pipes 5" to 12" (127 - 305 mm) I.D.



### Spare parts for CBC-1 centering collars

01	3012000	Wheel complete
02	3010200	Locking bolt