



AIRBLAST

High Carbon Steel Shot & Grit

Steel Shot

Steel Grit



S780
SS2.5



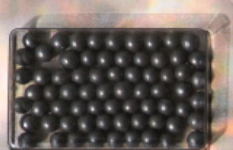
S330
SS1.0



G10
SG2.5



G25
SG1.0



S660
SS2.0



S280
SS0.8



G12
SG2.0



G40
SG0.7



S550
SS1.7



S230
SS0.6



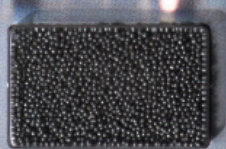
G14
SG1.7



G50
SG0.4



S460
SS1.4



S170
SS0.5



G16
SG1.4



G80
SG0.3



S390
SS1.2



S110
SS0.3



G18
SG1.2



G120
SG0.2

Steel Shot

Steel Grit

Application

S780/SS2.5
S660/SS2.0

G10/SG2.5
G12/SG2.0

Sand removal of large sized castings, scale removal of large sized products from forging, stamping, dieforging, drawing and rolling or after heat treatment (e.g. pipes, sections, plates, fittings, wire).

S550/SS1.7
S460/SS1.4

G16/SG1.4
G14/SG1.7

Sand removal of large and medium sized castings, scale removal of forging and heat-treated work pieces, surface blast cleaning of steel plates, sections and steel structures, shot peening of work pieces, cutting of granite.

S390/SS1.2
S330/SS1.0

G18/SG1.2
G25/SG1.0

Sand removal of medium and small sized castings, surface blast cleaning of forgings, heat-treated pieces, steel pipes, sections and steel structures, surface treatment before painting, shot peening of work pieces.

S280/SS0.8
S230/SS0.6

G25/SG1.0
G40/SG0.7

Surface blast cleaning of small sized castings, forgings and heat-treated pieces, aluminium and copper alloy castings, steel plates, steel pipes, sections and steel structures, shot peening of work pieces.

S170/SS0.5
S110/SS0.3

G50/SG0.4
G80/SG0.3
G120/SG0.2

Surface blast cleaning of stainless steel plates, thin steel plates, non ferrous alloys, dacromet coat.

SPECIFICATION HIGH CARBON STEEL SHOT

Chemical composition	(C): 0.80 - 1.20%	(Mn): 0.35 - 1.20%	(Si): ≥ 0.40	(S): ≤ 0.05%	(P): ≤ 0.05%
Hardness	40 - 50HRC, 52 - 56HRC, 56 - 60HRC				
Hardness deviation	Max. deviation ±3.0 HRC				
Microstructure	Tempered martensite or sorbite				
Density	7.4 g/cm ³				
Bulk density	4.4 g/cm ³				

mesh	mm	SS-2.5	SS-2.0	SS-1.7	SS-1.4	SS-1.2	SS-1.0	SS-0.8	SS-0.6	SS-0.5	SS-0.3
7	2.80	all pass									
8	2.36		all pass								
10	2.00	85%min		all pass	all pass						
12	1.70	97%min	85%min		5%max	all pass					
14	1.40		97%min	85%min		5%max	all pass				
16	1.18			97%min	85%min		5%max	all pass			
18	1.00				96%min	85%min		5%max	all pass		
20	0.850					96%min	85%min		10%max	all pass	
25	0.710						96%min	85%min		10%max	
30	0.600							96%min	85%min		all pass
35	0.500								97%min		10%max
40	0.425									85%min	
45	0.355									97%min	
50	0.300										80%min
80	0.180										90%min
120	0.125										
200	0.075										
325	0.045										
SAE J444		S-780	S-660	S-550	S-460	S-390	S-330	S-280	S-230	S-170	S-110

SPECIFICATION HIGH CARBON STEEL GRIT

Chemical composition	(C): 0.80 - 1.20%	(Mn): 0.60 - 1.20%	(Si): ≥ 0.40	(S): ≤ 0.05%	(P): ≤ 0.05%
Hardness	GP: 42 - 52HRC, GL: 53 - 60HRC, GH: 60 - 64HRC				
Hardness deviation	Max. deviation ±3.0 HRC				
Microstructure	Tempered martensite or sorbite				
Density	7.6 g/cm ³				
Bulk density	4.2 g/cm ³				

mesh	mm	SG-2.5	SG-2.0	SG-1.7	SG-1.4	SG-1.2	SG-1.0	SG-0.7	SG-0.4	SG-0.3	SG-0.2
7	2.80	all pass									
8	2.36		all pass								
10	2.00	80%min		all pass							
12	1.70	90%min	80%min		all pass						
14	1.40		90%min	80%min		all pass					
16	1.18			90%min	75%min		all pass				
18	1.00				85%min	75%min		all pass			
20	0.850										
25	0.710					85%min	70%min		all pass		
30	0.600										
35	0.500										
40	0.425						80%min	70%min		all pass	
45	0.355										
50	0.300							80%min	65%min		all pass
80	0.180								75%min	65%min	
120	0.125									75%min	60%min
200	0.075										70%min
325	0.045										
SAE J444		G-10	G-12	G-14	G-16	G-18	G-25	G-40	G-50	G-80	G-120